



# Lynton & Lynmouth Cliff Railway Access Guide

Last update June 2024 Version 0.6

This guide is designed as a walkthrough guide with supporting photos for your information. The Lynton & Lynmouth Cliff Railway attraction can be accessed via the Lynton (Top Station) or the Lynmouth (Bottom Station), this guide covers both access points.

Travelling from Lynton (top) to Lynmouth (bottom)	02
Travelling from Lynmouth (bottom) to Lynton (top)	18
Noises, Smells & Sensory considerations	32
The Cliff Top Café facilities & access	33
Mobile phone, 4G and WiFi coverage	35
Medical emergencies & first aid	36
Contact us or further questions	36

# Travelling from LYNTON to LYNMOUTH

CLIFF RAILWAY ROAD (TOP STATION) EX35 6HW



**CAR PARKING (Lynton)** There are public car parks and street parking in Lynton. The closest accessible Lynton Public Car Parks are Cross Street (Cross Street, EX35 6HG) [2 min walk gentle uphill gradient and pavement to Cliff Railway entrance] and Bottom Meadow (Castle Hill, EX35 6AR) [5 min walk steeper uphill gradient and pavement to Cliff Railway entrance] and the Valley of the Rocks (EX35 6JH) [15min walk with level access and pavement to Cliff Railway entrance].

**WC & FACILITIES (Lynton)** There is no public toilet or baby change facility at the Cliff Railway site. The Cliff Top Cafe does have a WC for cafe customers with restricted access and is unsuitable for wheelchairs. The closest public toilets with disability access are in Bottom Meadow Car Park and adjacent to the Town Hall in Lynton (cash or contactless payment required). There is a cash point within the old Lloyds Bank building close to the entrance of the Cliff Railway. Lynton has a small supermarket, chemist, post office, tourist information centre (Town Hall) and a variety of shops. There is free Wi-Fi coverage at the Cliff Railway top and bottom stations and our Cliff Top Café.





Cross Street Car park EX35 6HG



Cross Street Car Park towards Town Hall and Cliff Railway entrance





Public WC with disabled facilities at the Town Hall



Bottom Meadow Car Park, Castle Hill, EX35 6AR





Public WC with disabled facilities within Bottom Meadow Car Park



Bottom Meadow Car Park uphill towards Cliff Railway entrance



From Bottom Meadow Car Park through Lynton towards Cliff Railway entrance



**OUR ENTRANCE (Lynton)** The Cliff Railway top station is accessed through this arch. The distance to the Cliff Railway is 100m of gentle upward (and then downward) gradient, without steps and no uneven surface. The road will slope down gently towards the attraction. The road is wheelchair accessible.

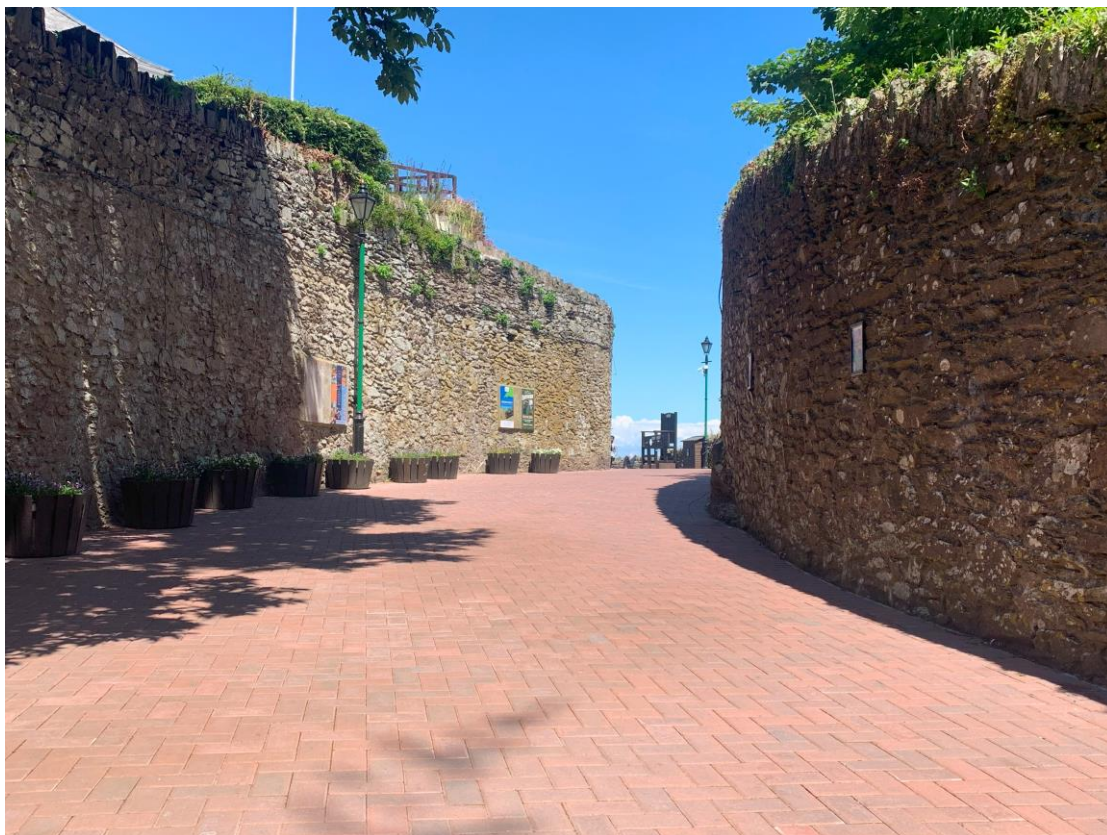


Entrance to the Cliff Railway (Lynton) opposite the Londis Supermarket





Cliff Railway Road, good walking surface with slight incline



Cliff Railway Road, good walking surface with slight incline





Cliff Railway Road, level surface, to gradient top and views



Cliff Railway Road, gentle gradient downhill to attraction & Cliff Top Cafe



**THE CLIFF TOP CAFÉ (Lynton)** As you approach the Cliff Railway attraction our Cliff Top Café is on the right. We provide seating inside for 11 and extensive outdoor seating. There is ramped access to the entrance, there are no steps and a WC is provided for Café customers. The WC has restricted access and may not be suitable for wheelchair customers. Additional information and photos are provided within the Café section of this guide.



The Lynton Cliff Top Café, great food, drinks, seating & amazing views



**QUEUE & PAYMENT (Lynton)** Visitors are asked to queue on the left of this barrier. Tickets are purchased either from the driver or at the bottom station after you have travelled. Prices are available on our website and are displayed on site. We accept contactless card payments only. No pre-booking is required, just turn up pay, and ride.



Cliff Railway Top Station public queue – payment is made at the bottom

**GETTING ON THE CLIFF RAILWAY (Lynton)** Wheelchairs and pushchairs do need to be folded to access the narrow Victorian carriages and wheelchair users may need to transfer to seating. The attraction is accessible for small mobility scooters but these do need to be folded and carried personally. The two carriages are named the 'North Car' and the 'South Car' the North Car is the one closest to the sea. The North Car has restricted access from the Lynton station and the South Car is often easier to access for those with additional mobility restrictions. The Cliff Railway operates continuously with approximately 10 minutes wait between journeys.

**DOGS & ASSISTANCE DOGS** All dogs are welcome to ride on the Cliff Railway and may access our Cliff Top Cafe. Assistance / Guide Dogs travel for free. We do make a small charge for doggy travel (lap dogs no charge.) All dogs must be kept on a lead (for safety) and travel inside the carriage. Fresh drinking water for dogs is provided in bowls at the site and we have complimentary dog biscuits with owner permission.





Top Station queue halt – Driver will call you forward to embark when ready



Driver opening the safety gate ready to invite visitors onto the carriage





Entrance onto the North Car carriage at Lynton Top Station



Entrance onto the South Car Carriage (easier access) at Lynton Top Station





Small step and gap between platform and carriage to embark

**INSIDE THE CARRIAGE** At the Lynton top station you will enter the rear of the carriage there is a small step / gap between the platform and the carriage. You will need to negotiate two small steps (down) to the seating area and a further single step (down) to reach the front viewing platform. You are welcome to stand in the rear of the carriage if you prefer (the steps are highlighted with yellow tape). To get off at the Lynmouth bottom station you will need to walk through the carriage and off via the front platform and entrance. The carriages are narrow and are 540 mm at their narrowest point. There is level access from the carriage onto the bottom (Lynmouth) platform. If you have a folded wheelchair this will need to be carried through the carriage yourselves as our drivers are not permitted to manually handle heavier wheelchairs, pushchairs or folded mobility scooters.





From rear standing area looking forward, two small steps down to seated area

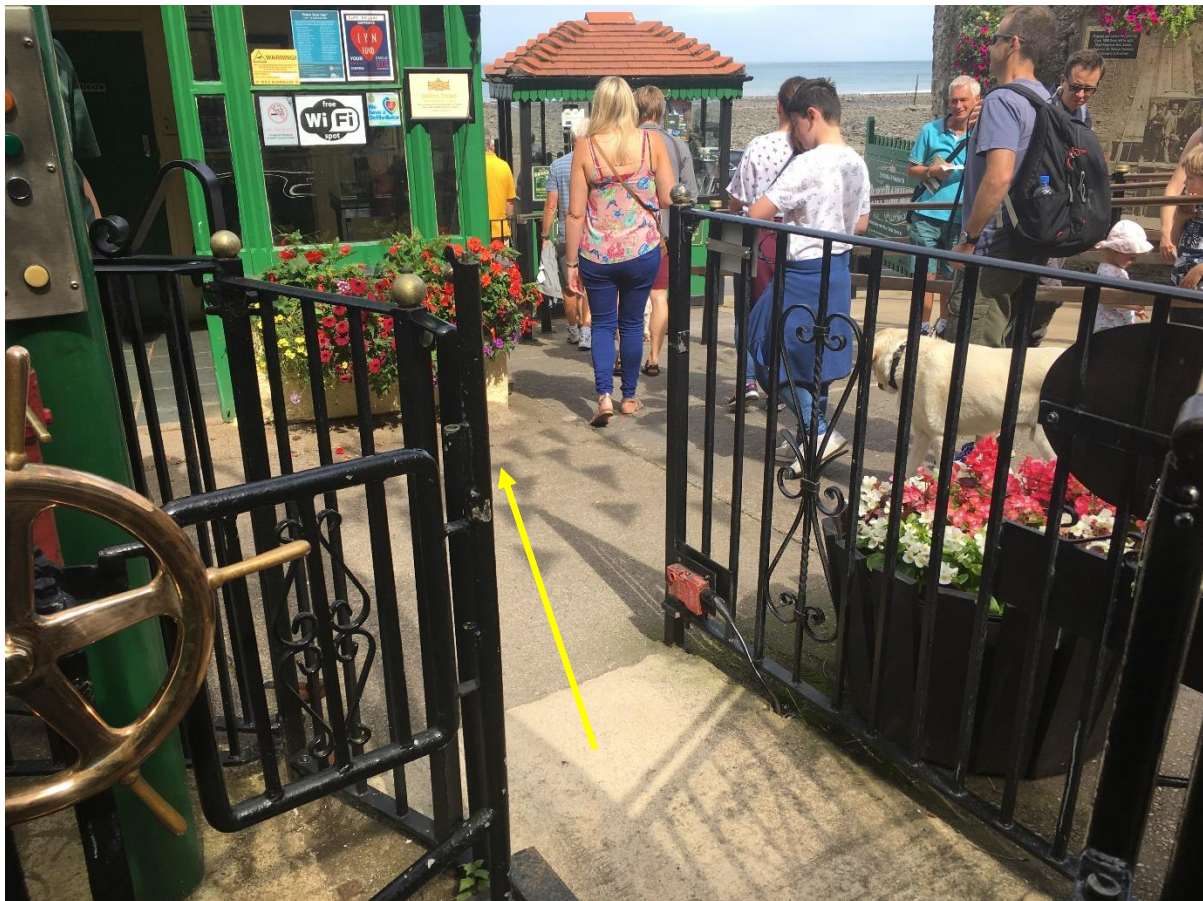


From seated area to front platform, one small step down to front platform



**EXIT THE ATTRACTION (Lynmouth)** When traveling from Lynton you will need to pay for your travel on arrival in Lynmouth at the ticket kiosk immediately in front of you. Take your time, there is no immediate requirement to follow everybody to the exit and there is space to transfer to wheelchair, scooter or pushchair and prepare yourself to leave. There is a gentle slope down to the kiosk and an electronic gate that will be released by the attendant for exiting wheelchairs, pushchairs and mobility scooters.

**EXPLORE LYNMOUTH:** You have arrived at the seafront with level access to the harbour, shops and the town of Lynmouth. Return trips to Lynton on the Cliff Railway are approximately every 10 minutes. Queues at Lynmouth can be longer during peak season. Please view our website for prices and closing times.

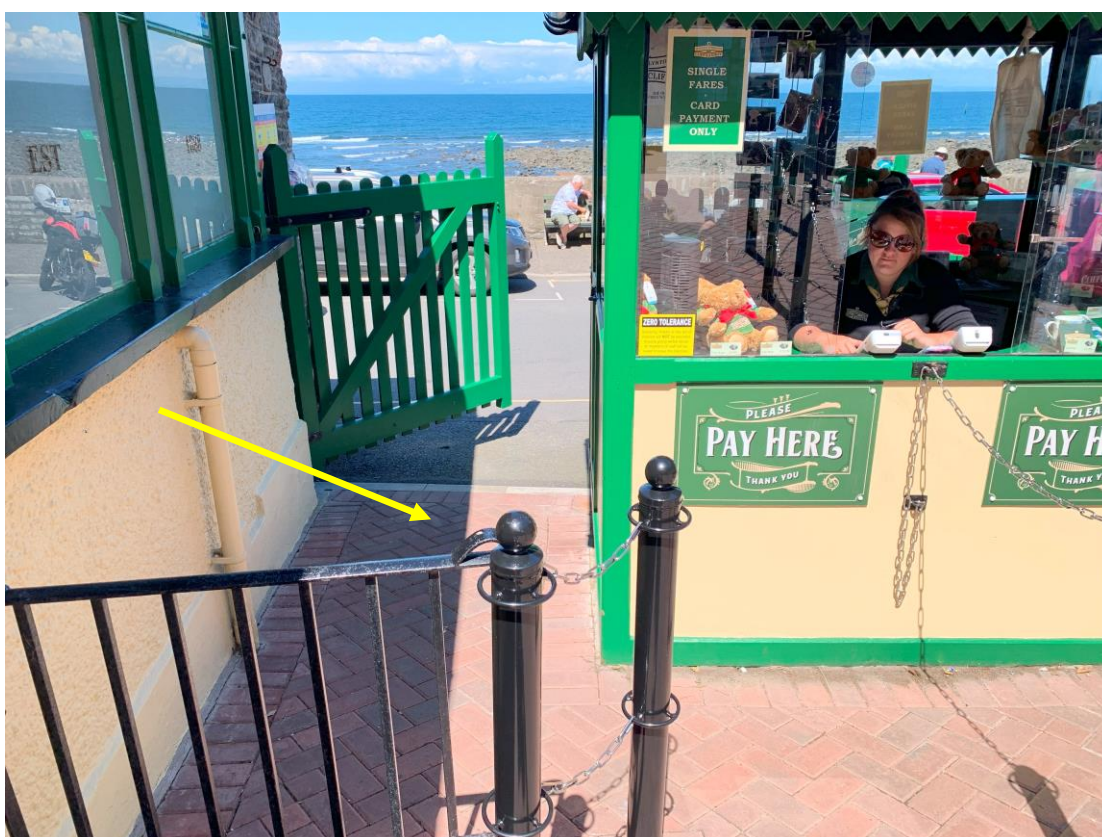


Front platform level access into bottom station yard





Gentle downhill gradient to kiosk pay station and exit to Lynmouth



Kiosk and exit, electronic exit gate (left) for pushchairs and wheelchairs our staff member will manage this and payment at side window where required.



# Travelling from LYNMOUTH to LYNTON

THE ESPLANADE (BOTTOM STATION) EX35 6EQ



**CAR PARKING (Lynmouth)** There are public car parks and street parking in Lynmouth. The closest accessible Lynmouth Public Car Park are The Esplanade (EX35 6EQ) [2min walk with level access to the Cliff Railway bottom station entrance] and Upper & Lower Lyndale (Watersmeet Rd, EX35 6EP) [8min walk with reasonably level access via the town to Cliff Railway bottom station entrance].

**WC & FACILITIES (Lynmouth)** There is no public toilet or baby change facility at the Cliff Railway site. The closest public toilets are in Lyndale Car Park and adjacent to the Memorial Hall in Lynmouth (cash or contactless payment required). There is no cash point in Lynmouth (there is one in Lynton), however, we accept all card payments. Lynmouth has a pleasant harbour, information centre (Exmoor National Park Centre), level walks, and a variety of shops, cafes and pubs. There is free Wi-Fi coverage at the Cliff Railway top and bottom stations and at our Cliff Top Café in Lynton.





Lower Lyndale Car Park, Watersmeet Road, EX35 6EP

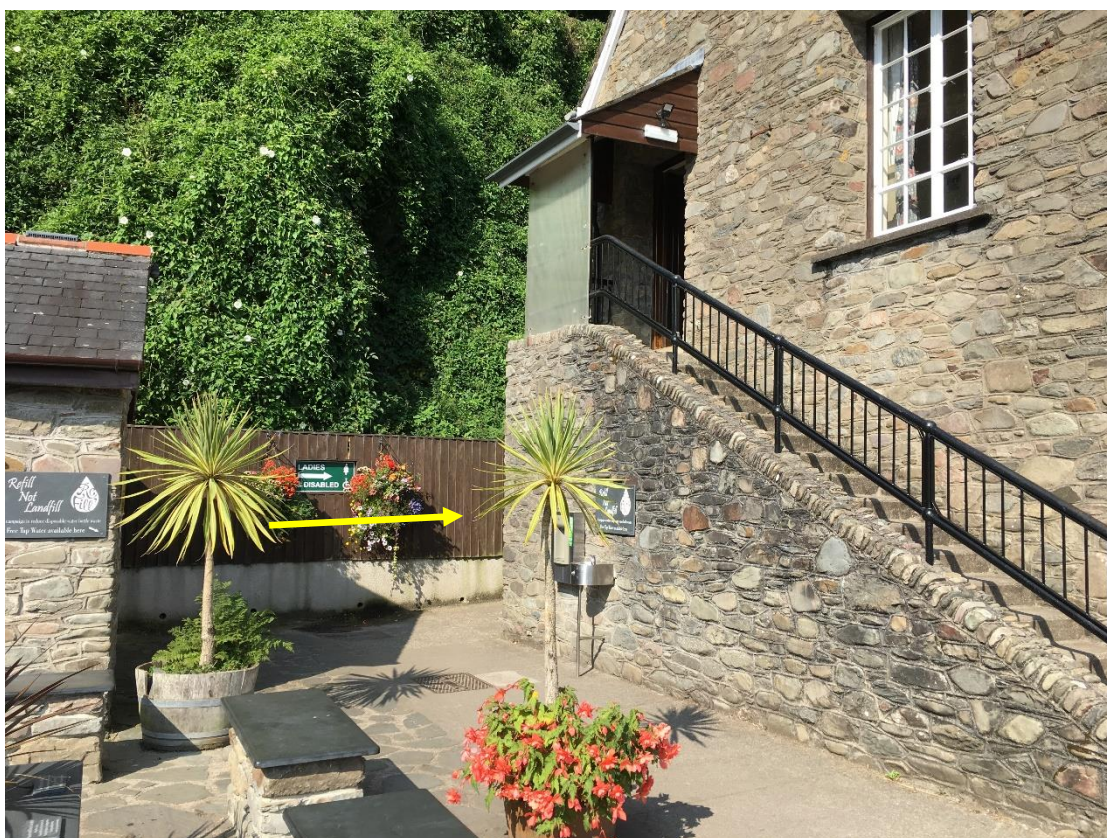


Public WC with disabled facilities within Lower Lyndale Car Park





From Lower Lyndale Car Park via Lynmouth High Street towards Cliff Railway



Memorial Hall at Harbour offers further Public WC with disabled facilities





From Lower Lyndale Car Park via harbour towards Cliff Railway



The Esplanade Car Park, Seafront Lynmouth, EX35 6EQ





Esplanade Car Park, Seafront Lynmouth to the Cliff Railway entrance (arrowed) is a very short level walk. No immediate WC facilities here (nearest at Lynmouth Memorial Hall)



**OUR ENTRANCE (Lynmouth)** The Cliff Railway bottom station is accessed on the seafront. The queue system has a short slope upwards to the entrance and payment kiosk. There are no steps within the site and the surfaces are reasonably even although not level.



Entrance to the Cliff Railway (Lynmouth) on the Esplanade Seafront

**QUEUE & PAYMENT (Lynmouth)** Our kiosk staff will assist with access through our queue system where necessary. At the Lynmouth bottom station tickets are purchased prior to travelling and no pre-booking is required. Prices are available on our website and are displayed on site. We accept contactless card payments only. No pre-booking is required, just turn up pay, and ride.

**DOGS & ASSISTANCE DOGS** All dogs are welcome to ride on the Cliff Railway and may access our Cliff Top Cafe. Assistance / Guide Dogs travel for free. We do make a small charge for doggy travel (lap dogs no charge.) All dogs must be kept on a lead (for safety) and travel inside the carriage. Fresh drinking water for dogs is provided in bowls at the site and we have complimentary dog biscuits with owner permission.





Queue system with small uphill gradient with good surface



Queue system with driver managing visitors at access point to carriage



**GETTING ON THE CLIFF RAILWAY (Lynmouth)** Wheelchairs and pushchairs do need to be folded to access the narrow Victorian carriages and wheelchair users may need to transfer to seating. The attraction is accessible for small mobility scooters but these do need to be folded and carried personally. The two carriages are named the 'North Car' and the 'South Car' the North Car is the one closest to the sea. The North Car has restricted access from the Lynton station and the South Car is often easier to access for those with additional mobility restrictions. The Cliff Railway operates continuously with approximately 10 minutes wait between journeys.



Level access and gate onto front platform of the Cliff Railway carriage



**INSIDE THE CARRIAGE** At the Lynmouth bottom station you will enter via the front platform of the carriage. Seating is immediately available, or you are welcome to stand on the front platform, or at the rear, of the carriage if you prefer. To get off at the Lynton top station you will need to walk through the carriage and negotiate two further small steps (up) to the rear of the carriage and exit by the rear door where there is a small step / gap between the platform and the carriage (the steps are highlighted with yellow tape). The carriages are narrow and are 540 mm at their narrowest point. If you have a folded wheelchair this will need to be carried through the carriage yourselves as our drivers are not permitted to manually handle heavier wheelchairs, pushchairs or folded mobility scooters.

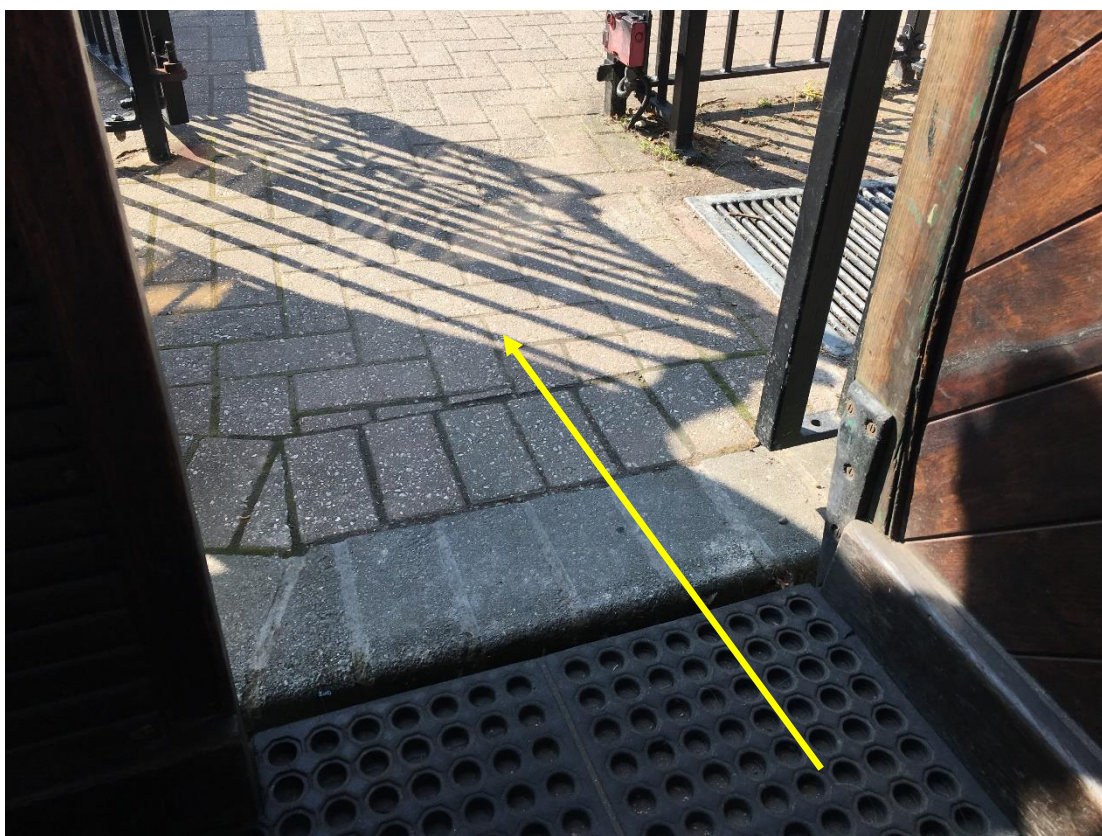


Step from front platform into seated area inside of the carriage





From front platform area and seating area, two small steps up to the rear standing area and the exit route for Lynton.



Small step and gap between platform and carriage to disembark



**EXIT THE ATTRACTION (Lynton)** When traveling from Lynmouth and arriving in Lynton you will have paid for your travel in advance. There is no requirement to stamp your ticket or display proof of travel, you are free to go and explore the shops and the town of Lynton or visit our Cliff Top Café. Return trips to Lynmouth on the Cliff Railway are approximately every 10 minutes. Please view our website for prices and closing times.

**ACCESS TO THE CLIFF TOP CAFÉ (Lynton)** As you disembark the Cliff Railway attraction our Cliff Top Café is immediately on the left. We provide seating inside for 11 and extensive outdoor seating. There is ramped access to the entrance, there are no steps and a WC is provided for Café customers. The WC has restricted access and may not be suitable for wheelchair customers. Additional information and photos are provided within the Café section of this guide.



The Lynton Cliff Top Café, great food, drinks, seating & amazing views



**EXIT THE ATTRACTION (Lynton)** After admiring the amazing views, the town of Lynton can be found at the end of our exit road. This is approximately 100m of gentle upward (and then downward) gradient, without steps and no uneven surface. The road will slope down gently towards the main road and under the arch into Lynton. Seating is provided along the route. Wheelchair accessible.

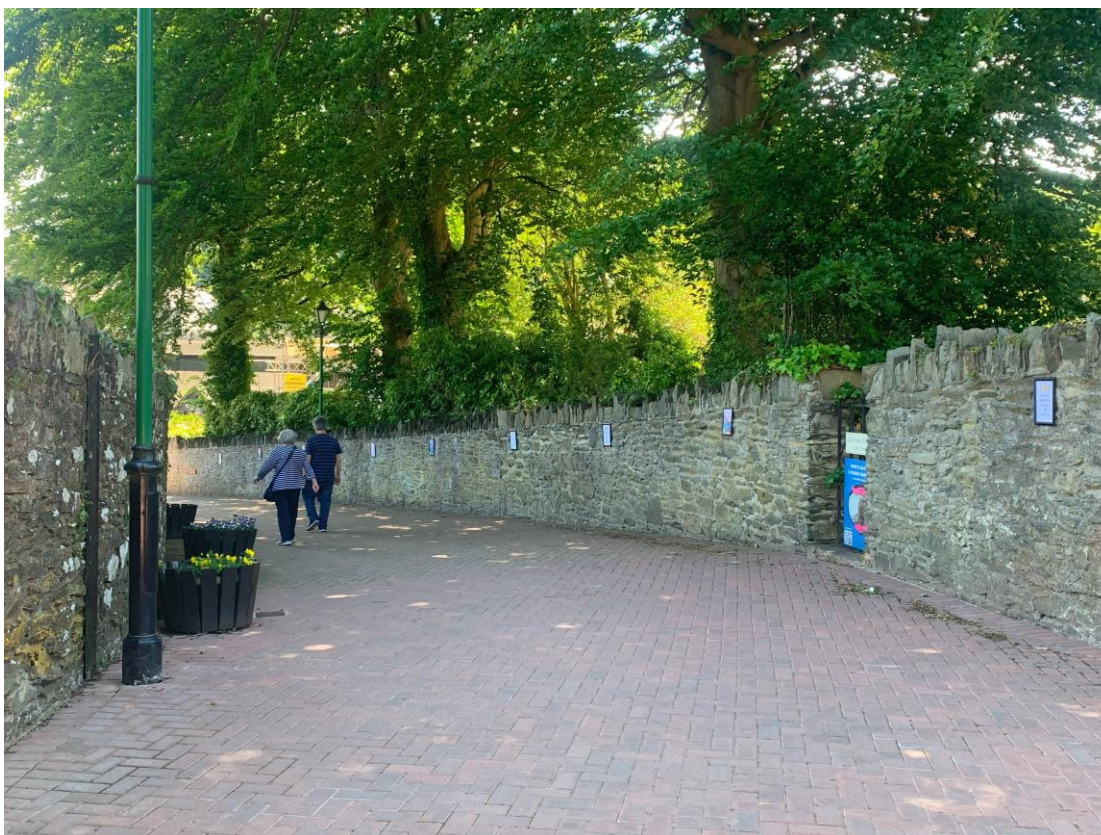


Cliff Railway Road, towards Lynton, good walking surface with slight incline





Exit towards Lynton town, good surface, gentle downward gradient



Exit towards Lynton town, good surface, gentle downward gradient





Exit towards Lynton town, good surface, gentle downward gradient



Lynton town exit under Cliff Railway archway



# Noises, Smells & Sensory

## Other considerations for our visitors

Travel on the Cliff Railway does include squeaks and noise associated with the Victorian engineering, the rails, the hauling ropes and the filling and emptying of the tanks with water. This may be alarming for those that may be sensitive to noise but there are no sudden or very high levels of noise. A bell on the archway above the carriage signifies the start of the journey but is a pleasant low-level sound.

The carriages do shudder in motion as the braking system operates during the journey creating a slight forward and backward swaying motion with a light bump as the carriages come to rest at the platform at the end of their journey.



There are no strong or unpleasant smells associated with the operation of the Cliff Railway. There is no internal electric lighting within the carriages, there is natural lighting only, there is no strobe lighting at the site, no amplified music, no sudden alarms and there are no public address systems or announcements at the site.

The front platform has a high safety barrier, but the steep incline can be alarming for nervous passengers.

Our drivers are welcoming and will answer any questions but please respect our driver's space during travel.



# The 'Famous' Cliff Top Cafe

Other considerations for our visitors



The Cliff Top Café is located at the top of the Cliff Railway in the former Grade II Cliff Railway waiting rooms. The views are stunning, and it is well worth a visit. Due to the historic nature of this Victorian building our WC facilities are limited, further information and photos are provided as part of this guide.

- ✓ Ramped access
- ✓ Seating inside & outside
- ✓ Amazing Views
- ✓ Vegetarian, Vegan & GF
- ✓ Sandwiches, Light Lunches
- ✓ Traditional Devon Cream Tea
- ✓ Cakes & Ice Cream
- ✓ Hot & Cold Drinks
- ✓ Local Ales, Wines & Prosecco
- ✓ Eat in or Take away
- ✓ Five Star Hygiene Rating
- ✓ Free Wi-Fi
- ✓ Dogs Welcome
- ✓ WC for café customers





Gentle ramped access to the entrance of the Cliff Top Cafe



Access to the WC space is restricted at the Cliff Top Cafe





The provided WC is for Café customers only. The WC has restricted access and may not be suitable for wheelchair customers. There is no baby change facility, no emergency alarm is fitted, and no assistance handles are fitted for transfer.

## Mobile Coverage, 4G and WiFi

Other considerations for our visitors

Mobile phone coverage within Lynton and Lynmouth is good with 4G access in most areas of the towns. The Lynton & Lynmouth Cliff Railway has free Wi-Fi access within the site and the Cliff Railway Cliff Top Cafe also offers good phone coverage and free Wi-Fi to customers.





# Medical Emergencies & assistance

Medical Emergency? Dial 999 or 112

Lynton & Lynmouth Cliff Railway staff are all trained in offering first aid assistance and have current and updated disability awareness training to assist with individual needs. Defibrillators are both on site and situated within the towns and in the event of a medical emergency people should call for help and dial 999 or 112 to request the emergency services, and a location of defibrillator if required.



## ANY QUESTIONS?

All our staff are happy to answer any questions you may have.

T: 01598 753486

E: [contact@cliff railwaylynton.co.uk](mailto:contact@cliff railwaylynton.co.uk)

[www.cliff railwaylynton.co.uk](http://www.cliff railwaylynton.co.uk)

Help us improve - We welcome all feedback about this guide

Further local information can be obtained at the Lynton & Lynmouth website:

[www.visitlyntonandlynmouth.com](http://www.visitlyntonandlynmouth.com)